

Research

Open Access

Quantitative investigation of reproduction of gonosomal condensed chromatin during trophoblast cell polyploidization and endoreduplication in the east-european field vole *Microtus rossiaemeridionalis*

Tatiana G Zybina*, Eugenia V Zybina, Margarita S Bogdanova and Grigory I Stein

Address: Institute of Cytology, Russian Academy of Sciences, 4 Tikhoretsky ave, 194064 St. Russia

Email: Tatiana G Zybina* - zybina@mail.cytspb.rssi.ru; Eugenia V Zybina - zybina@mail.cytspb.rssi.ru;

Margarita S Bogdanova - msb@mail.cytspb.rssi.ru; Grigory I Stein - Stein@mail.cytspb.rssi.ru

* Corresponding author

Published: 8 April 2003

Received: 20 March 2003

Reproductive Biology and Endocrinology 2003, 1:32

Accepted: 8 April 2003

This article is available from: <http://www.RBEj.com/content/1/1/32>

© 2003 Zybina et al; licensee BioMed Central Ltd. This is an Open Access article: verbatim copying and redistribution of this article are permitted in all media for any purpose, provided this notice is preserved along with the article's original URL.

Abstract

Simultaneous determinations of DNA content in cell nuclei and condensed chromatin bodies formed by heterochromatized regions of sex chromosomes (gonosomal chromatin bodies, GCB) have been performed in two trophoblast cell populations of the East-European field vole *Microtus rossiaemeridionalis*: in the proliferative population of trophoblast cells of the junctional zone of placenta and in the secondary giant trophoblast cells. One or two GCBs have been observed in trophoblast cell nuclei of all embryos studied (perhaps both male and female). In the proliferative trophoblast cell population characterized by low ploidy levels (2–16c) and in the highly polyploid population of secondary giant trophoblast cells (32–256c) the total DNA content in GCB increased proportionally to the ploidy level. In individual GCBs the DNA content also rose proportionally to the ploidy level in nuclei both with one and with two GCBs in both trophoblast cell populations. Some increase in percentage of nuclei with 2–3 GCBs was shown in nuclei of the placenta junctional zone; this may be accounted for by genome multiplication via uncompleted mitoses. In nuclei of the secondary giant trophoblast cells (16–256c) the number of GCBs did not exceed 2, and the fraction of nuclei with two GCBs did not increase, which suggests the polytene nature of sex chromosomes in these cells. In all classes of ploidy the DNA content in trophoblast cell nuclei with the single GCB was lower than in nuclei with two and more GCBs. This can indicate that the single GCB in many cases does not derive from fusion of two GCBs. The measurements in individual GCBs suggest that different heterochromatized regions of the X- and Y-chromosome may contribute in GCB formation.

Introduction

Study of genome multiplication in various trophoblast cell populations is of great importance for elucidating different mechanisms of genome reproduction responsible for performance by the trophoblast cells of their specific

functions. These functions include invasion and phagocytosis of maternal tissues as well as, on the other hand, proliferation of trophoblast cell populations that do not contact directly the maternal tissues. To study behavior of chromosomes during the modified cell cycle characteristic

of trophoblast cells, various chromosomal markers can be used.

One of such markers is one of two X-chromosomes, which in female individuals is genetically inactive; this provides for a dose compensation of X-linked genes in somatic cells of female (XX) and male (XY) individuals [1]. The inactivated X-chromosome is visualized in the interphase nucleus as sex chromatin or Barr body: a clump of condensed chromatin located beneath the nuclear membrane or near nucleolus [1–4]. In most studied mammalian species, inactivation ("lyonization") involves a major part of one of X-chromosomes in somatic cells of female individuals [5–7]. Nevertheless, in some species, the second X-chromosome also participates in heterochromatization of sex chromosomes. Such a regularity is observed in the species whose X-chromosome contains large blocks of structural heterochromatin [8–12]. In several vole species the structural heterochromatin is concentrated mainly in X- and Y-chromosomes [13–17]. On the other hand, in some vole species, large condensed chromatin clumps resembling sex chromatin (Barr body) are revealed in cells both of female and male individuals [8,18,19], presumably due to a significant degree of heterochromatization of both sex chromosomes.

In the East-European field vole *Microtus rossiaemeridionalis* (formerly *Microtus subarvalis*) the structural heterochromatin also is present predominantly in sex chromosomes and forms a large, telomere-localized block in the long arm of X-chromosome and practically the entire long arm of the acrocentric Y-chromosome [16,17,20,21]. Analysis of behavior of the gonosomal eu- and heterochromatin in interphase nuclei of trophoblast cells is important for study of mechanisms and role played for the inactivation of sex chromosomes in embryogenesis and embryo implantation. Besides, the bodies of the condensed chromatin formed by sex chromosomes (gonosomal chromatin bodies, GCB) in *M. rossiaemeridionalis* can be used to study behavior of interphase nucleus chromatin for elucidating mechanisms of cell polyploidization not only in highly polyploid nuclei, but also in nuclei of a relatively low ploidy.

Materials and Methods

Used in the work were placentae of the East-European field vole; this species was initially described as *Microtus subarvalis* [22], but later, according to the nomenclature codex, was changed to *Microtus rossiaemeridionalis* [23]. Placentae were kindly provided by Dr.E.D. Sholl. To obtain the placentae females were caged with males and the morning on which vaginal plugs were confirmed was designated by 1st day *post coitum* (*pc*).

The experiments were performed in compliance with regulations of the National Ethics Committee under the auspice of the Russian Academy of Sciences.

The placentae were fixed with 3:1 mixture of ethanol and glacial acetic acid for 2 hour. A total of 12 embryos from 6 females were studied: 3 females each at the 10th and 14th day *pc*.

Permanent squash preparations were made of the main part of the material. For this purpose the fixed placentae were dehydrated in the two portions of 96% ethanol (1 hour in each portion), then incubated in one portion of 70% ethanol (2 hour); the 2–3 mm pieces of placentae were macerated for 20 min in 45% acetic acid, placed on object slides, slightly pressed and covered with coverslips. The slides were then placed on dry ice (CO₂). On freezing the preparations, the coverslips were removed and the slides were air-dried. The slides were Feulgen-stained (hydrolysis in 5 N HCl for 30 min at room temperature).

A part of the fixed material was dehydrated in a graded series of ethanols and embedded in paraffin; from this material, histological sections were cut at 7 μm and Feulgen-stained. Besides, there was analyzed a collection material of placentae at the 9–17th days *pc* (more than 30 fetuses from 8 females), which was fixed, paraffin embedded and cut according to the procedure mentioned above; these section were stained with Boemer hematoxylin and by Feulgen reaction as described above.

The DNA content was measured using a "Videotest" image analyze system composed of an CPT 83 60 digital CCD-videocamera (Chipper, USA) installed on an EC Bimam-13 microscope and of computer IBM PC 166. Input of the image and measurement of the integral optical density characterizing the DNA amount in the nucleus and separately in GCB were performed using a Videotest-Morpho software (St. Petersburg); a possibility of measuring DNA content in hepatocyte nuclei with this image analyze system was shown earlier [24]. An objective 40 × 0.65 and an interference filter at 550 nm were used. In each placenta there were analyzed from 150 to 400 trophoblast cell nuclei of each of cell populations and 50 nuclei of fetal erythrocyte nuclei as a control of the DNA content in diploid nuclei. The following parameters were evaluated: a) DNA content per nucleus in arbitrary units (a.u.) that reflects ploidy (c); b) DNA content in GCB (in individual bodies and as the total in nuclei with 2–3 GCB, in a.u.); c) ratio of the DNA content in the nucleus to the total DNA content in GCB; d) number of GCB; e) percentage of nuclei containing one and several GCB. From these data, the means and the standard errors were calculated as well as the correlation coefficient (*r*) between various parameters. Since the DNA content in GCB could differ depending on

sex of the embryos, a part of numerical data were presented for individual embryos.

Results

At the initial period of placentation of the field vole embryo (9th day *pc*) the continuous layer of secondary giant trophoblast cells is present at the periphery of the ectoplacental cone; these cells invade actively decidua basalis. However, as early as at the 10th day of development, during differentiation of the placenta junctional zone and labyrinth, accumulations of trophoblast cells of the junctional zone migrate towards decidua basalis. They move across the layer of the secondary giant cells to form finally together with them the peripheral zone of the fetal part of placenta [25]. For several next days, in the depth of the placenta junctional zone and labyrinth the mitotic activity still is high, whereas the trophoblast cells of the peripheral zone undergo differentiation and completely stop mitotic divisions.

Nuclei of the secondary giant trophoblast cells and of the placenta junctional zone of all studied field vole embryos both in the squash preparations and in the Feulgen-stained sections contained one or, more seldom, 2–3 compact bodies of gonosomal chromatin. We failed to distinguish sex of the *M. rossiaemeridionalis* embryos by the presence of the GCB, like the sex is determined in many mammals from the presence of sex chromatin [26–31]. Analysis of the collection material of the East-European field vole (more than 30 embryos from 8 females) did not reveal placentae whose trophoblast cells were lacking of large GCB resembling morphologically the sex chromatin. Therefore, we believe that in the vole *M. rossiaemeridionalis*, like in *M. agrestis* [18,19] and *M. oregoni* [8], the condensed bodies of the gonosomal chromatin are present in cells of both sexes. In trophoblast cells of the placenta junctional zone, GCBs are morphologically similar to Barr bodies: they are as a rule closely adjacent to the nuclear membrane surface or lay near the nucleolus. In most nuclei, one GCB was revealed; however, nuclei with 2, more seldom 3 GCBs were present not infrequently (Fig. 1).

In nuclei of secondary giant trophoblast cells, 1–2 large compact GCB contacting the nuclear membrane or nucleolus are observed (Fig. 2).

It is to be noted that at early development stages (the 10th day *pc*), when nuclei contain strands of non-classic polytene chromosomes (endoprophase [32]), GCB are somewhat similar to them by their size, while differ by a higher condensation (Fig. 2b). At the same stages, in nuclei of the reticular structure (endointerphase [32]) the heterochromatized body in some cases is non-uniform by the degree of chromatin condensation; occasionally, there was ob-

served a banded pattern of a part of the body (Fig. 2a) similar to that in polytene chromosome discs.

At the late development stages (the 14th day *pc*) when strands of polytene chromosomes are disintegrated presumably into endochromosomes GCBs predominantly retain their entirety: the nucleus keeps containing one-two large compact bodies (Fig. 2c,2d,2e,2f).

We measured the DNA content in the nuclei and simultaneously in their GCBs of the secondary giant trophoblast cells and in cells of the placenta junctional zone; lower ploidy levels (2–16c) characterized the latter, as compared with the secondary giant cells (32–2048c) [25,32–34].

Results of measurement of the DNA content in GCBs are presented in Figs. 3,4,5 and in Tables 1,2,3,4. The total amount of DNA in GCBs in nuclei of trophoblast cells have been found to increase proportionally with increase of the ploidy level at both studied stages of embryonal development in the both cell populations (Table 1, 2). This parallel increase takes place in nuclei both with one and with 2–3 GCB. Such proportional increase of the GCB material in the course of polyploidization is also confirmed by a high positive correlation between the DNA content in the nucleus and the total DNA amount in GCB ($r = 0.88$ and 0.79 for cells of the junctional zone of placenta at the 10th and 14th days *pc*, respectively). The separate GCBs also shown the increase of the DNA content proportionally to the ploidy level (Fig. 3, 4). The number of GCBs in nuclei of different ploidy somewhat varies. In the trophoblast cells of the placenta junctional zone, a marked increase of the fraction of 8c and 16c nuclei containing 2–3 GCBs was found (Fig. 5a,5c). By contrast, in the secondary giant trophoblast cells the portion of nuclei with 2 GCBs at the 10th day of development was lower than in the 8–16c nuclei in the placenta junctional zone. At the 14th day *pc* the portion of nuclei with 2 GCBs in the secondary giant trophoblast cells was markedly higher than at the 10th day *pc* (Fig. 5b,5d).

It is remarkable that the total DNA content in GCBs in nuclei with 2–3 GCBs in (junctional zone of placenta) and in nuclei with 2 GCBs (in the secondary giant trophoblast cells) in all ploidy classes, on average, exceeds the DNA content in the single body in nuclei with one GCB (Tables 1 and 2). This regularity is revealed at both the 10th and at the 14th day *pc*; in the latter case, it is even more pronounced. It is also to be noted that in nuclei with two GCB these bodies often differ essentially from each other by their DNA content (Fig. 4).

The proportional rise of the DNA content in GCB during trophoblast cell polyploidization is also confirmed by the ratio of the DNA amount in the nucleus to the total DNA

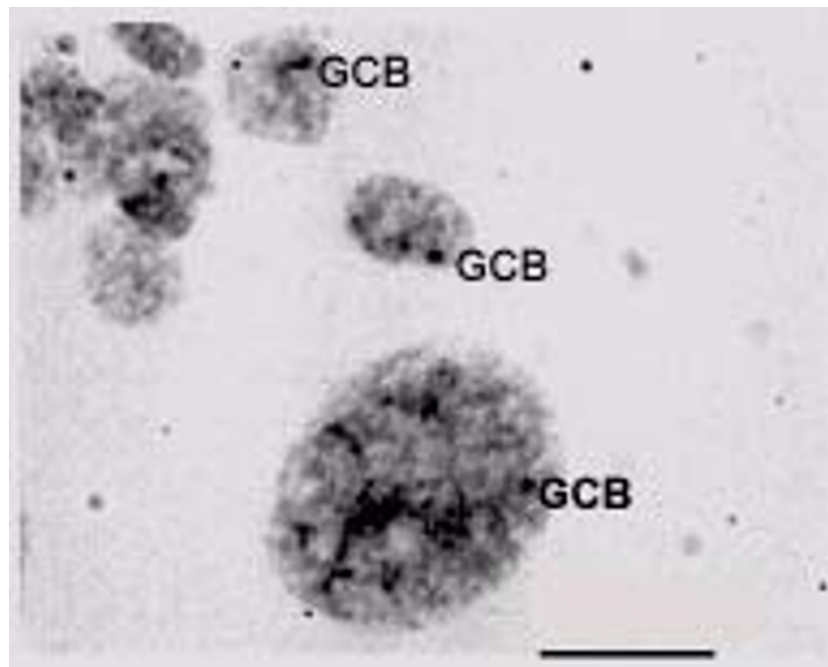


Figure 1

The nuclei of the trophoblast cells of the junctional zone of placenta and a secondary giant trophoblast cell (down, right) with one or two gonosomal chromatin bodies (GCBs) attached to the nuclear membrane or in contact with nucleolus (10 day *pc*). Feulgen staining. Bar is 15 μ m.

amount in GCB (Tables 3 and 4). The data obtained show that this value does not change significantly throughout the series of polyploidization rounds, which indicates a multifold augmentation of the material of heterochromatized blocks of sex chromosomes. This regularity is observed both in the low-polyploid (2–16c) trophoblast cells of the placenta junctional zone and in highly polyploid (32–128c) secondary giant trophoblast cells in all studied embryos. It has turned out that in all cases the ratio of the DNA content in the nucleus to the DNA content in GCBs in total is higher in nuclei with one GCB than in nuclei containing several GCBs. The data obtained indicate that in nuclei with 2 GCBs, sex chromosomes are heterochromatized to a greater degree, which seems to be due to a more complicated, than in other mammals, character of inactivation of sex chromosomes. The DNA content in

individual GCB (Fig. 3, 4), proved a tendency for doubling in the course of consecutive polyploidization cycles: both in cell nuclei of the placenta junctional zone and in the secondary giant trophoblast cells.

Discussion

According to the data obtained, the presence of one, more seldom two GCBs is characteristic of trophoblast cell nuclei of all studied embryos of *M. rossiaemeridionalis*. In this aspect our data resemble results of studying interphase nuclei of *M. agrestis* both in embryonal cells and in definite tissues of adult females and males [9,13,18,19]. In nuclei of both male and female there were most often observed two large compact heterochromatin bodies seen as heteropicnotic areas of X- and Y-chromosomes when the cells entered mitosis. The presence of GCBs in cells of

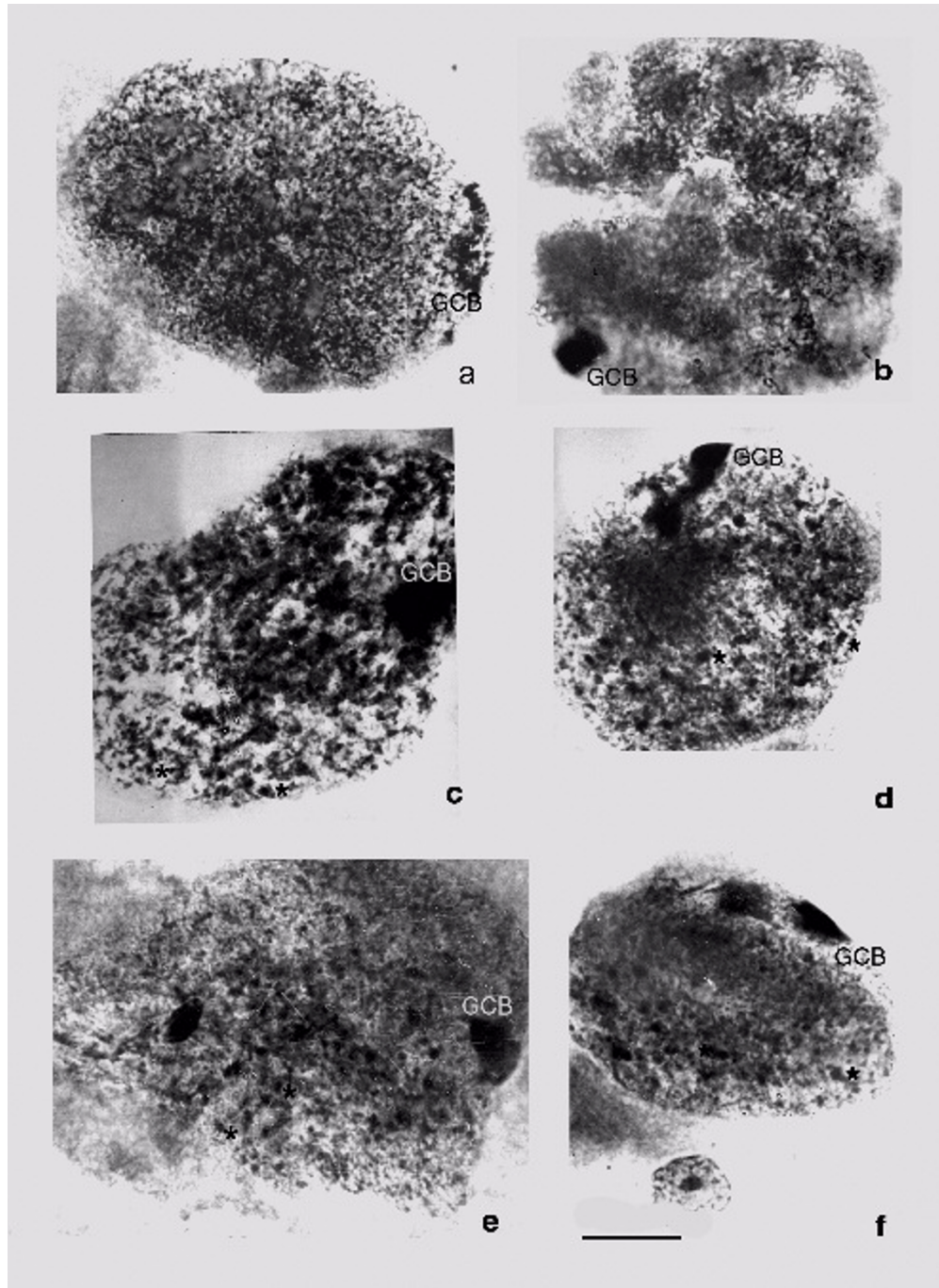


Figure 2

The secondary giant trophoblast cells of the field vole *Microtus rossiameridionalis* at 10th (a, b) and 14th (c-f) day pc. a – a nucleus of a giant trophoblast cell of network structure (endointerphase), the elongated GCB (GCB) with signs of disc patterns characteristic of polytene chromosomes; b – a nucleus of a giant trophoblast cell with bundles of polytene chromosomes (endoprophase); GCBs are different of these bundles by higher degree of condensation; c-f – nuclei of the secondary giant trophoblast cells with 1–2 GCBs and a great number of endomitotic chromosomes (asterisks). Feulgen staining. Bar is 10 μ m.

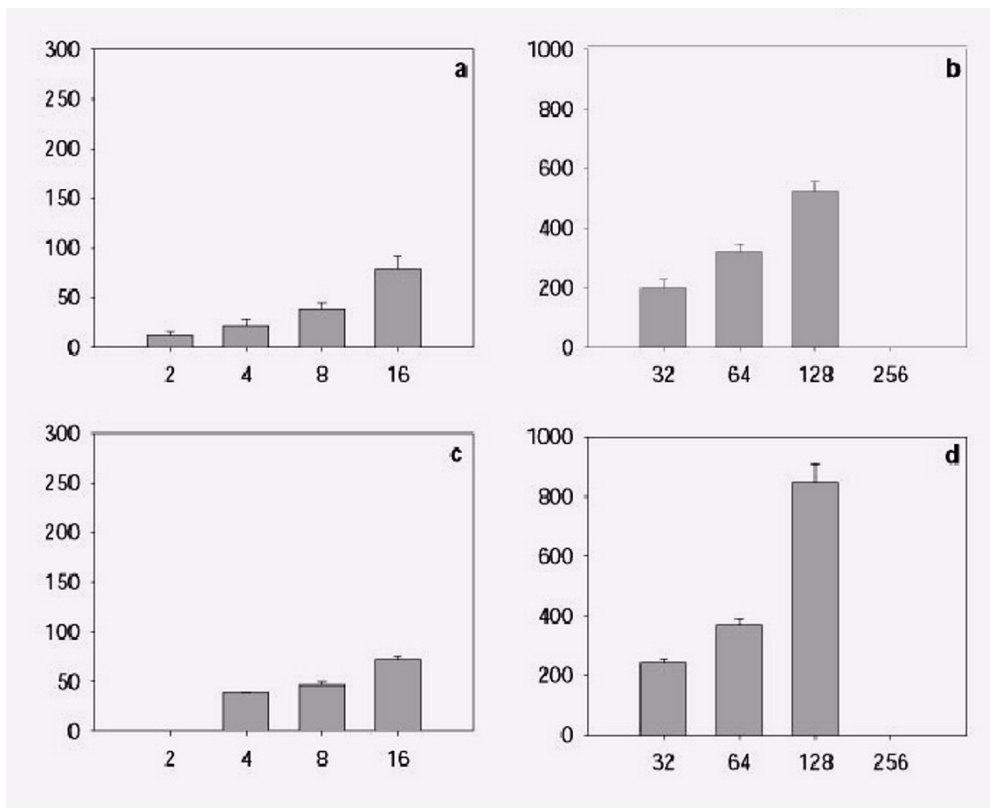


Figure 3

The mean DNA content in the separate GCBs in the trophoblast cells of the placenta junctional zone (a, c) and the secondary giant trophoblast cells (b, d) at the 10th (a, b) and 14th (c, d) day pc. Abscissa – ploidy, c; ordinate – the mean DNA content in the separate GCBs in each class of ploidy, arbitrary units.

both sexes in *M. rossiaemeridionalis* and *M. agrestis* seems to be due to peculiarities of the structural heterochromatin of the vole sex chromosomes [35,36]; this also affects considerably the character of inactivation of X-chromosome in these animals [16,17].

Our data indicate that the GCB material doubles in each polyploidization cycle in the placenta trophoblast cells of *M. rossiaemeridionalis*. This is accompanied in the trophoblast cells of the placenta junctional zone both by a rise of the number of GCBs (the percentage of nuclei with 2–3 GCBs somewhat increases at transition from 2–4c to 8c and 16c) and by doubling of material of individual heterochromatin bodies. The rise of the GCB number at polyploidization seems to be due to the occurrence of

uncompleted polyploidizing mitoses leading to an increase of the number of chromosomes [34]; such mitoses were described in trophoblast of the placenta junctional zone of this vole species [25]. The multifold augmentation of the DNA amount in individual GCBs (in nuclei both with one and with two and more GCBs) in each genome reproduction cycle seems to be due to a tendency for the close binding of sister chromatids of sex chromosomes. In several tissues of *M. agrestis* not only heteropicnosis of X- and Y-chromosomes was observed in mitosis, but also a longer binding of sister chromatids of sex chromosomes in metaphase; this seems to result in their delayed separation in anaphase [18]. We observed similar pictures in *M. rossiaemeridionalis* (*M. subarvalis* [25]) as well as in the present study (data not shown). It can be

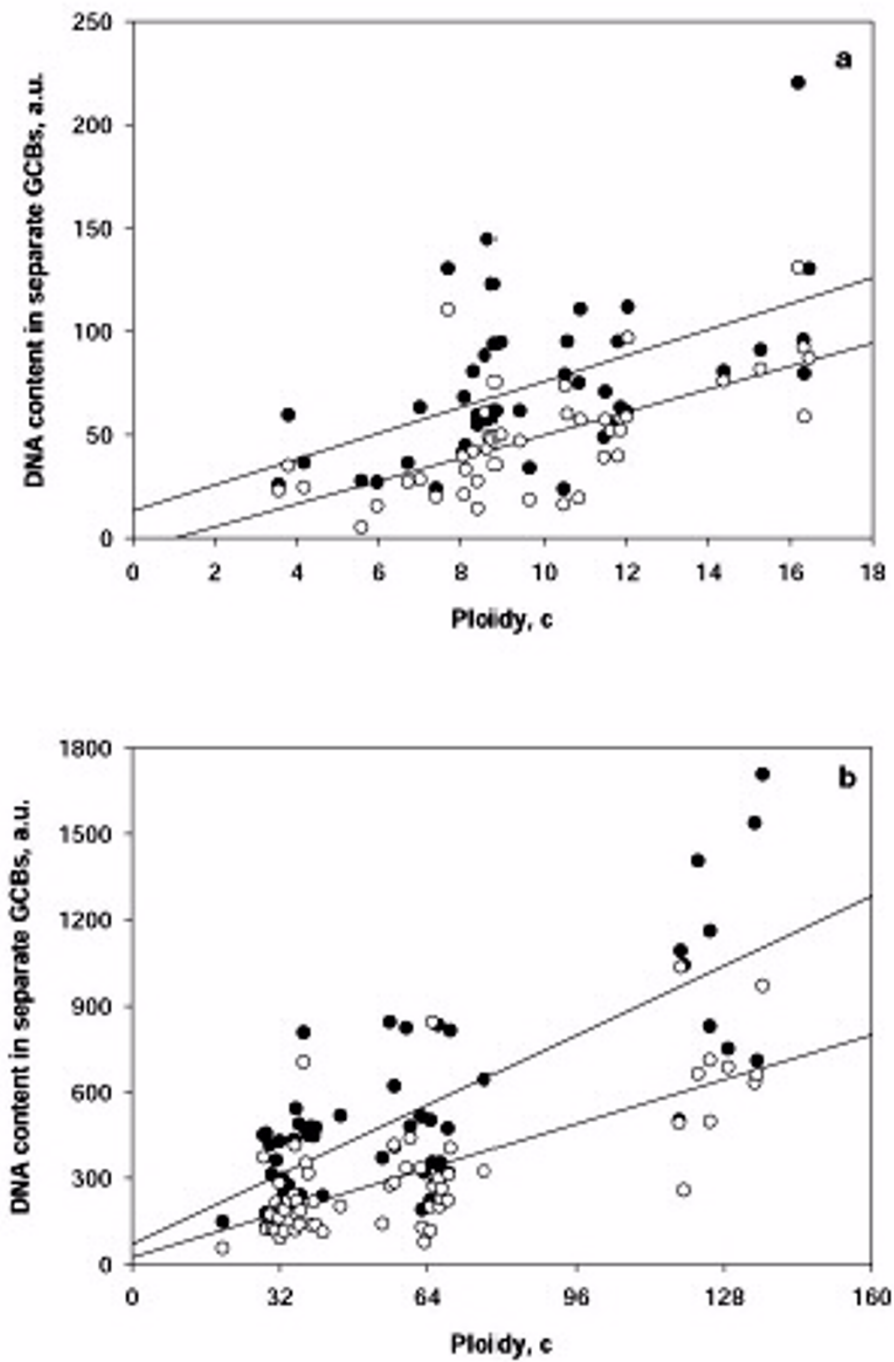


Figure 4

Relationship between ploidy and DNA content in the larger (black circle) and smaller (white circle) GCB in the nuclei with two GCBs in the trophoblast cells of the junctional zone of placenta (a) and secondary giant trophoblast cells (b). DNA content in separate GCBs is expressed in arbitrary units (a.u.).

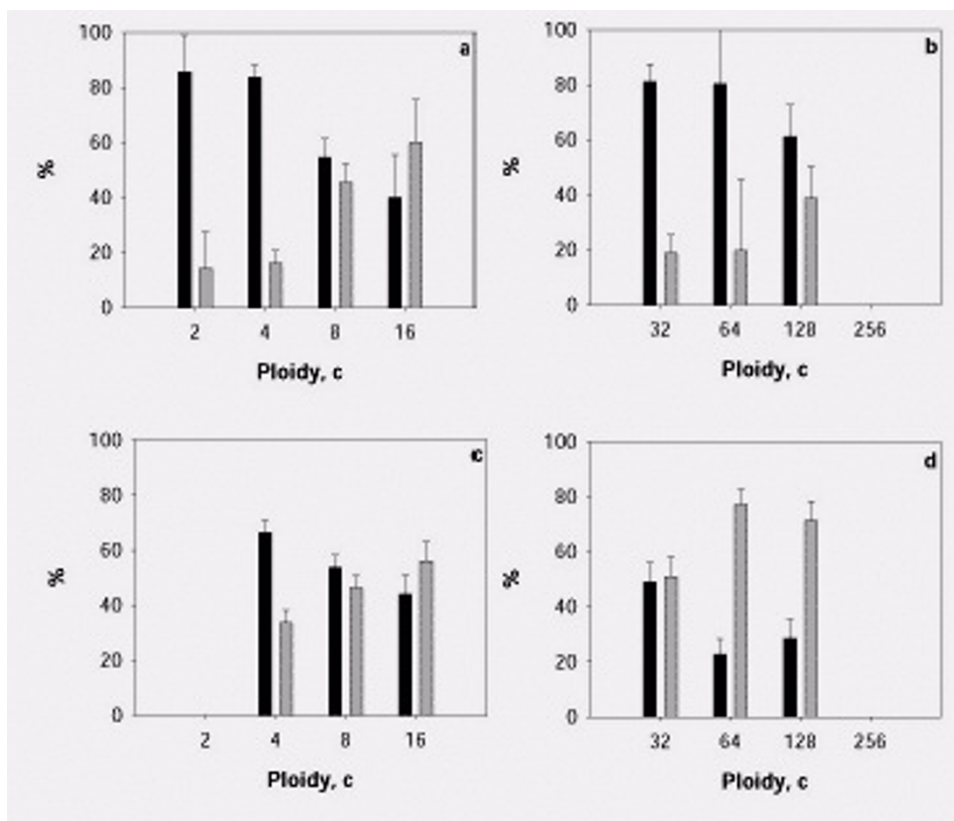


Figure 5

Percentage of nuclei with one and two or more GCBs in the trophoblast cells of the junctional zone of placenta (a, c) and in nuclei with one and two GCBs in giant trophoblast cells (b, d) at 10th (a, b) and 14th (c, d) day *pc*. Black columns – nuclei with one GCB, grey columns – nuclei with two or more GCBs.

suggested that the longer attachment of sister chromatids in mitosis in trophoblast cells of the placenta junctional zone might be one of prerequisite for the subsequent transition of the trophoblast cells to the endoreduplication cycle.

As to the giant trophoblast cells, in which pictures of non-classic polyteny were observed, they also shown a multi-fold augmentation of the GCB material in nuclei both with one and with two GCBs; however, this is not accompanied by any clear-cut tendency of increase of the GCB number. Thus, these data confirm the polytene nature of GCBs in the giant trophoblast cells in *M. rossiaemeridionalis*, when the multiplication of the material of chromosomes occurs without increase of their number. This

resembles behavior of Barr bodies in giant trophoblast cells of rats and rabbits [32,37–39].

In a number of tissues of Diptera, polytenization is accompanied by an underreduplication of heterochromatin regions [40,41]. Data of the present work suggest the complete replication of the GCB material, a major part of which consists of structural heterochromatin. In *Drosophila* the underreduplication is restricted to the region containing satellite DNA [40,42]; meanwhile, in the field vole *M. agrestis*, heterochromatin of sex chromosomes does not contain satellite DNA (Arrighi et al, 1970). This indicates the regular replication of the whole material of sex chromosomes (or of its significant part) in the giant tro-

Table 1: DNA content in the gonosomal chromatin bodies (GCB) of placental trophoblast cells at the different ploidy levels at the 10th day pc (arbitrary units).

Cell population	Ploidy	DNA content in a GCB in the nuclei with single GCB		Total DNA content in GCBs in the nuclei with two or more GCBs	
		No. of embryo		No. of embryo	
		1-3	1-4	1-3	1-4
Trophoblast cells of the junctional zone of placenta	2 c	14.9 ± 1.06	14.3 ± 0.4	24.5 ± 2.6	-
	4 c	32.0 ± 2.0	25.7 ± 0.9	44.3 ± 3.8	33.6 ± 2.0
	8 c	66.2 ± 4.5	53.8 ± 2.0	83.1 ± 11.3	84.2 ± 2.4
	16 c	124.9 ± 28.9	184.6 ± 6.1	182.5 ± 16.2	151.6 ± 6.7
Secondary giant trophoblast cells	32 c	291.8 ± 46.9	218.9 ± 4.7	413.0 ± 45.3	386.1 ± 26.5
	64 c	525.7 ± 38.1	426.9 ± 14.6	640.1 ± 58.1	788.3 ± 35.4
	128 c	869.3 ± 98.9	182.7 ± 30.5	1120.5 ± 98.9	1296.3 ± 97.1

Table 2: DNA content in the gonosomal chromatin bodies (GCB) of placental trophoblast cells at the different ploidy levels at 14th day pc (arbitrary units).

Cell population	Ploidy	DNA content in a GCB in the nuclei with single GCB			Total DNA content in GCBs in the nuclei with two or more GCBs		
		No. of embryo			No. of embryo		
		2-1	2-4	2-2	2-1	2-4	2-2
Trophoblast cells of the junctional zone of placenta	2 c	26.4 ± 6.1	-	-	-	-	-
	4 c	37.0 ± 3.7	32.1 ± 1.1	35.8 ± 7.2	68.5 ± 13.7	66.6 ± 3.3	60.4 ± 11.3
	8 c	70.3 ± 3.3	78.0 ± 4.3	70.1 ± 10.4	114.9 ± 8.8	103.5 ± 4.6	105.6 ± 23.1
	16 c	147.4 ± 13.2	252.0 ± 11.9	152.5 ± 21.2	165.5 ± 16.9	245.4 ± 11.8	196.6 ± 25.8
Secondary giant trophoblast cells	32 c	349.0 ± 29.5	336.1 ± 9.5	414.3 ± 73.4	505.12 ± 35.6	509.5 ± 22.5	510.5 ± 65.2
	64 c	696.1 ± 114.1	526.3 ± 7.2	820.4 ± 112.1	753.2 ± 55.3	928.0 ± 70.1	872.5 ± 97.5
	128 c	1250.5 ± 290.3	729.1 ± 31.9	1504.8 ± 108.7	1828.8 ± 227.8	1283.5 ± 19.7	1661.5 ± 252.5
	256 c	1875.2 ± 383.5	-	-	-	-	-

phoblast cells of *M.rossiaemeridionalis* in the course of a series of endoreduplication cycles.

It is of interest that the total DNA content in GCBs in trophoblast cells in nuclei with two GCBs is not equal to that in the single GCB, but exceeds it in all ploidy classes. This indicates that the single GCB in many cases does not seem to result from fusion of two GCBs. In this connection, it is not unlikely that in nuclei with one and with two GCBs different heterochromatized regions of both sex chromosomes may contribute in GCB formation.

The highly condensed chromatin bodies originated from two sex chromosomes were observed in the embryonic and adult tissues of *M. agrestis* [18]. Thus, during cleavage the heteropicnotic sex chromosomes were revealed as paired strands of different shape, whereas both at postimplantation stages and in adult tissues the gonosomal chromatin was present as two ovoid compact clumps or elongated bodies adjacent to the nuclear membrane [18].

Data about the time of replication of the material of gonosomes and the large chromocenters that they form in interphase indicate that the chromocenters may consist of both the inactivated euchromatic part of X-chromosome

Table 3: Ratio of nuclear DNA content to the total DNA content in gonosomal chromatin bodies (GCBs) in the placental trophoblast cells at 10th day pc

Cell population	Ploidy	Nuclei with single GCB		Nuclei with two or more GCBs	
		No. of embryo		No. of embryo	
		1-3	1-4	1-3	1-4
Trophoblast cells of the junctional zone of placenta	2c	23.7 ± 2.0	23.6 ± 2.9	16.0 ± 1.4	-
	4c	22.2 ± 1.1	25.9 ± 1.6	14.1 ± 1.2	17.6 ± 12.2
	8c	21.3 ± 13.7	23.7 ± 2.0	16.8 ± 2.8	15.6 ± 11.5
	16c	25.2 ± 4.7	14.5 ± 3.6	13.6 ± 1.6	13.9 ± 1.8
Secondary giant trophoblast cells	32 c	21.3 ± 3.7	22.4 ± 15.3	13.8 ± 1.4	20.1 ± 16.9
	64 c	24.6 ± 2.0	23.3 ± 11.5	20.6 ± 2.9	13.6 ± 11.6
	128 c	27.1 ± 3.8	23.3 ± 11.5	20.3 ± 1.6	13.1 ± 11.3
	256 c	23.2 ± 10.9	-	-	-

Table 4: Ratio of nuclear DNA content to the total DNA content in gonosomal chromatin bodies (GCBs) in the placental trophoblast cells at 14th day pc.

Cell population	Ploidy	Nuclei with single GCB			Nuclei with two or more GCBs		
		No. of embryo			No. of embryo		
		2-1	2-4	2-2	2-1	2-4	2-2
Trophoblast cells of the junctional zone of placenta	2 c	12.4 ± 2.4	-	-	-	-	-
	4 c	25.1 ± 3.0	18.7 ± 1.8	20.7 ± 6.2	9.5 ± 7.1	11.2 ± 1.7	11.4 ± 1.8
	8 c	23.2 ± 1.6	17.6 ± 1.7	17.3 ± 2.8	14.1 ± 3.8	12.7 ± 1.5	12.5 ± 1.7
	16 c	17.7 ± 1.6	10.4 ± 1.4	16.0 ± 1.8	14.8 ± 3.1	10.2 ± 1.4	13.2 ± 1.5
Secondary giant trophoblast cells	32 c	17.7 ± 1.6	15.0 ± 1.7	14.8 ± 3.4	13.0 ± 3.4	10.2 ± 1.4	8.9 ± 1.3
	64 c	21.9 ± 3.7	16.6 ± 1.7	12.7 ± 2.3	16.1 ± 2.8	11.3 ± 1.7	10.3 ± 1.3
	128 c	19.6 ± 0.2	30.9 ± 2.8-	11.9 ± 0.8	13.9 ± 5.2	13.5 ± 2.0	11.9 ± 20.2
	256 c	-	-	-	-	8.3 ± 1.9	-

and structural heterochromatin regions of sex chromosomes. Euchromatin of the inactivated X-chromosome of *M. agrestis* is replicated later than the autosomal euchromatin, but earlier than constitutive heterochromatin of sex chromosomes [9,12,43]. A prominent chromocenter was observed in the cultured kidney epithelial cell nuclei of *M. agrestis*; it comprised late replicating constitutive heterochromatin and "sex chromatin" that undergoes replication later than euchromatin but earlier than constitutive heterochromatin. [9].

The peculiarities of gonosomal chromatin body formation in field voles seem to be due to the nature of heterochromatin of their sex chromosomes. Large regions of

structural heterochromatin of sex chromosomes of *M. agrestis* differ by their composition and properties from the pericentromeric autosomal heterochromatin that exhibits the most of characteristics of the constitutive heterochromatin. In sex chromosomes of *M. agrestis*, 65% of heterochromatin are composed of single copies, while 34%, of repeated sequences [35]. In these regions, retrotransposons are accumulated [36]. It has been shown that the heterochromatin regions of *M. agrestis* are capable for transcription on previously condensed chromosomes to the same degree as euchromatin [44]. Therefore, some authors believe that these regions by their structural organization are similar to G-discs of metaphase chromosomes and are composed mainly of middle repetitive mobile el-

ements capable for transcription [36]. Thus, the heterochromatin regions (or, at least, their individual loci) of sex chromosomes of *M. agrestis* have, to a degree, properties of euchromatin.

The sex chromosomes of *M. rossiaemeridionalis*, like gonosomes of the sufficiently well studied *M. agrestis*, contain a significant part of the genome constitutive heterochromatin. The X-chromosome is the largest acrocentric of the chromosomal set about a half of its long arm is composed of structural heterochromatin. The Y-chromosome also is one of the largest acrocentrics, and practically its entire long arm is composed of structural heterochromatin [45]. This allows suggesting that the gonosomal heterochromatin and the compact bodies that it forms in *M. rossiaemeridionalis* are similar by their nature to those in *M. agrestis*. These bodies most likely can include both constitutive heterochromatin of sex chromosomes and inactivated euchromatin of one of X-chromosomes. It cannot be ruled out that the structural non-homogeneity of large GCB in the giant trophoblast cells of *M. rossiaemeridionalis*, in particular, the disc-like pattern in several parts of GCBs (Figure 2a) belongs to regions of inactivated euchromatin of X-chromosome.

The presence of two and more GCBs in trophoblast cells of *M. rossiaemeridionalis* can be due both to genome multiplication and to the fact that the constitutive heterochromatin and inactivated euchromatin of both sex chromosomes (XX and XY) form two, rather than one, large chromocenters. Difference between the DNA amounts in GCBs in nuclei with one and with two GCBs seems to be an indirect indication in favor of possible formation of two chromocenters from two different gonosomes. Thus, in female embryos (XX) one of two X-chromosomes may be lyonized and form a larger GCB.

The present work has revealed a peculiarity of the time of detection of GCBs in *M. rossiaemeridionalis* as compared with sex chromatin bodies in the rat and rabbit trophoblast. In these animals the sex chromatin bodies are observed during early embryonal development, when trophoblast cells undergo endoreduplication. At later development stages processes of chromosome replication are terminated, non-classic polytene chromosomes cease to be visualized and the nuclei acquire a reticular structure. This is accompanied by a gradual decondensation of the sex chromatin bodies [37–39]. In the trophoblast of *M. rossiaemeridionalis*, gonosomal heterochromatin bodies are present not only at early stages of development, but also later, up to the 17th day *pc*. Nuclei with non-classic polytene chromosomes, as early as at the 13–14th day *pc*, are transformed into nuclei containing numerous endochromosomes, probably as a result of disintegration of polytene chromosomes into oligotene fibrils. However,

the disintegration, probably, does not involve heterochromatinized gonosomal bodies because one or two large GCBs persists in the giant nuclei, the DNA content in separate GCBs remaining to be proportional to the ploidy level of giant nuclei. It seems likely that the presence of large blocks of constitutive heterochromatin favor a closer attachment of sister chromatids in polytene chromosomes, which prevents their separation into endochromosomes (in contrast to autosomes that do not contain the prominent blocks of heterochromatin). This suggestion is confirmed by data on a tighter and longer association of heterochromatic regions of X-chromosomes in mitosis in field voles [18,46]; this binding also seems to facilitate a close attachment of X-chromosome chromatids during endoreduplication.

Acknowledgments

The work was supported by the Russian Foundation for Basic Research (grant No. 01-04-49839). The authors are grateful to Dr. E.D. Sholl for supply of the material of field vole placentae and Dr. L.Z. Pevzner for the translation and edition of the manuscript.

References

1. Lyon M **Gene action in the X-chromosome of the mouse (*Mus musculus* L.)** *Nature* 1961, **190**:372-373
2. Barr M and Bertram E **A morphological distinction between neurons of the male and female and the behaviour of the nucleolar satellite during accelerated nucleoprotein synthesis** *Nature* 1949, **163**:676-677
3. Takagi N, Sugawara O and Sasaki M **Regional and temporal changes in pattern of X-chromosome replication during the early pregnancy** *Chromosoma* 1982, **85**:275-286
4. Ogura H, Takada S, Mise N, Sugimoto M, Tan S and Takagi N **Translocation breakpoint possibly predisposes to nonrandom X-chromosome inactivation in mouse embryos bearing Searle's T(X;16)16H translocation** *Cytogenet Cell Genet* 1998, **80**:173-178
5. Back F **The variable condition of euchromatin and heterochromatin** *Intern Rev Cytol* 1976, **45**:25-64
6. Nesterova T and Zakian S **X-chromosome inactivation in mammals** *Genetics* 1994, **30**:293-317 In Russian
7. Lyon M **X-chromosome inactivation: a repeat hypothesis** *Cytogenet Cell Genet* 1998, **80**:133-137
8. Ohno S, Becak W and Becak L **X-autosome ratio and the behaviour pattern of individual X-chromosomes in placental mammals** *Chromosoma* 1964, **15**:14-30
9. Pera F and Wolf U **Das Replication und Morphologie der X-Chromosomen waehrend der Synthesepriode bei *Microtus agrestis*** *Chromosoma* 1967, **22**:378-389
10. Zakharov A and Egolina N **Asynchrony of DNA replication and mitotic spiralization along heterochromatic portions of Chinese hamster chromosomes** *Chromosoma* 1968, **23**:365-385
11. Zakharov A and Egolina N **Differential spiralization along mammalian mitotic chromosomes. I. BUDR-revealed differentiation in Chinese hamster chromosomes** *Chromosoma* 1972, **38**:341-365
12. Schmid W and Leppert M **Rates of DNA synthesis in heterochromatic and euchromatic segments of the chromosome complements of two rodents** *Cytogenetics* 1969, **8**:125-135
13. Lee J and Junis J **Constitutive heterochromatin during early embryogenesis of *Microtus agrestis*** *Exp Cell Res* 1970, **59**:339-341
14. Cooper J and Hsu T **The C-band and G-band of *Microtus agrestis* chromosomes** *Cytogenetics* 1972, **11**:295-304
15. Zakharov A and Tsvetkova T **Linear differentiation of the X-chromosomes of the field vole *Microtus agrestis*** *Tsitologia* 1975, **17**:15-18 in Russian

16. Zakian S, Kulbakina N, Meyer M, Semenova L, Bochkarev M, Radjabli S and Serov O **Non random inactivation of the X-chromosome in interspecific hybrid voles** *Genet Res* 1987, **50**:22-27
17. Zakian S, Nesterova T, Cheryakene O and Bochkarev M **Heterochromatin as a factor, affecting the inactivation of the X-chromosome in interspecific hybrid voles (Microtidae, Rodentia)** *Genet Res* 1991, **58**:105-110
18. Lee J and Junis J **A development study of constitutive heterochromatin in *Microtus agrestis*** *Chromosoma* 1971, **32**:237-250
19. Pera F **Struktur und Position der heterochromatischen Chromosomen in Interphasekernen von *Microtus agrestis***. *Z Zellforsch* 1969, **98**:421-436
20. Grafodatsky A, Lushnikova T and Radjabli S **Peculiarities of distribution of repeated DNA sequences of sex chromosomes of the four rodent species** *Tsitologia* 1985, **27**:1308-1310 in Russian
21. Borodin P, Sablina O and Rodionova M **Pattern of X-Y chromosome pairing in microtine rodents** *Hereditas* 1995, **123**:17-23
22. Meyer M, Orlov V and Sholl E **Sibling species in *Microtus arvalis* group (Rodentia, Cricetidae)** *Zool J* 1972, **51**:724-738 in Russian
23. Malygin V *Sistematics of common voles Moscow, Nauka* 1983, in Russian
24. Stein G, Panteleev V, Povarkova A and Kudryavtsev B **Capacities of image analyser "Videotest" for microphotometric investigation in cytology** *Tsitologia* 1998, **40**:913-916 in Russian
25. Zybina T, Zybina E and Stein G **Characteristic features of differentiation and polyploidization of trophoblast cells in the connective zone and labyrinth of placenta of the field vole, *Microtus subarvalis*** *Tsitologia (In Russian)* 1987, **29**:549-559 In Russian
26. Austin C and Amoroso E **Sex chromatin in early cat embryos** *Exp Cell Res* 1957, **13**:419-421
27. Park W **The occurrence of sex chromatin in early human and macaque embryos** *J Anat* 1957, **91**:369-373
28. Zybina E **Sex chromatin in giant cells of trophoblast and in cells of early rabbit embryos** *Fed Proc* 1965, **24**:868-876
29. Ohno S *Chromosomes and sex-linked genes Berlin, Springer-Verlag* 1967,
30. Axelson M **Sex chromatin in early pig embryos** *Hereditas* 1968, **60**:347-354
31. Lindmark C and Melander J **Sex chromatin in pre-implantation embryos of the Syrian hamster** *Hereditas* 1970, **64**:128-131
32. Zybina E and Zybina T **Polytene chromosomes in mammalian cells** *Intern Rev Cytol* 1996, **165**:53-119
33. Zybina E, Kudryavtseva M and Kudryavtsev B **Morphological and cytofluorometric study of the common vole giant cells trophoblast** *Tsitologia* 1975, **17**:254-260 in Russian
34. Zybina T, Zybina E and Stein G **Trophoblast Cell Invasiveness And Capability For The Cell And Genome Reproduction In Rat Placenta** *EPBM* 2000, **4**:039-057 On line
35. Arrighi F, Hsu T, Saunders P and Saunders G **Localization of repetitive DNA in the chromosomes of *Microtus agrestis* by means of in situ hybridization** *Chromosoma* 1970, **32**:224-236
36. Neitzel H, Kalscheuer V, Henschel S, Digweed M and Sperling K **Beta-heterochromatin in mammals: evidence from studies in *Microtus agrestis* based on the extensive accumulation of LI and non-LI retroposons in the heterochromatin** *Cytogenet Cell Genet* 1998, **80**:165-172
37. Zybina E and Mosjan I **Sex chromatin bodies during endomitotic polyploidization of trophoblast cells** *Tsitologia* 1967, **9**:265-272 in Russian
38. Zybina T, Zybina E, Kudryavtseva M and Kudryavtsev B **A cytophotometrical study of sex chromatin in the giant cell nuclei of rabbit trophoblast** *Tsitologia* 1980, **22**:1037-1045 in Russian
39. Zybina E and Zybina T **Inactivated X-chromosome as an interphase chromosome marker for evaluation of mechanisms of genome multiplication in the rat and rabbit placental trophoblast cells** *Trophoblast Res* 1998, **11**:51-63
40. Prokofieva-Belgovskaya A *Heterochromatic chromosome regions Moscow, Nauka* 1986, in Russian
41. Zhimulev I *Polytene chromosomes: morphology and structure Novosibirsk, Nauka* 1992, in Russian
42. Endow S and Gall J **Differential replication of satellite DNA in polyploid tissues of *Drosophila virilis*** *Chromosoma* 1975, **50**:175-192
43. Wolf U, Flinspach G, Boehm R and Ohno S **DNS replikationmuster bei den reisen-geschlechtchromosomen von *Microtus agrestis*** *Chromosoma* 1965, **16**:609-617
44. Sperling K, Kalscheuer V and Neitzel H **Transcriptional activity of constitutive heterochromatin in the mammal *Microtus agrestis* (Rodentia, Cricetidae)** *Exp Cell Res* 1987, **173**:463-472
45. Mazurok N, Rubtsova N, Isaenko A, Pavlova M, Slobodyanyuk S, Nesterova T and Zakian S **Comparative chromosome and mitochondrial DNA analyses and phylogenetic relationships within common voles (*Microtus*, Arvicolidae)** *Chromosome Res* 2001, **9**:107-120
46. Pera F **Arrangement of spindle apparatus in mitoses of different ploidy** *Exp Cell Res* 1975, **92**:419-427

Publish with **BioMed Central** and every scientist can read your work free of charge

"BioMed Central will be the most significant development for disseminating the results of biomedical research in our lifetime."

Sir Paul Nurse, Cancer Research UK

Your research papers will be:

- available free of charge to the entire biomedical community
- peer reviewed and published immediately upon acceptance
- cited in PubMed and archived on PubMed Central
- yours — you keep the copyright

Submit your manuscript here:
http://www.biomedcentral.com/info/publishing_adv.asp

